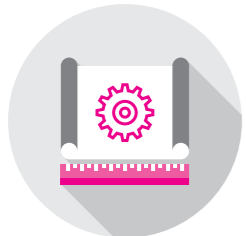
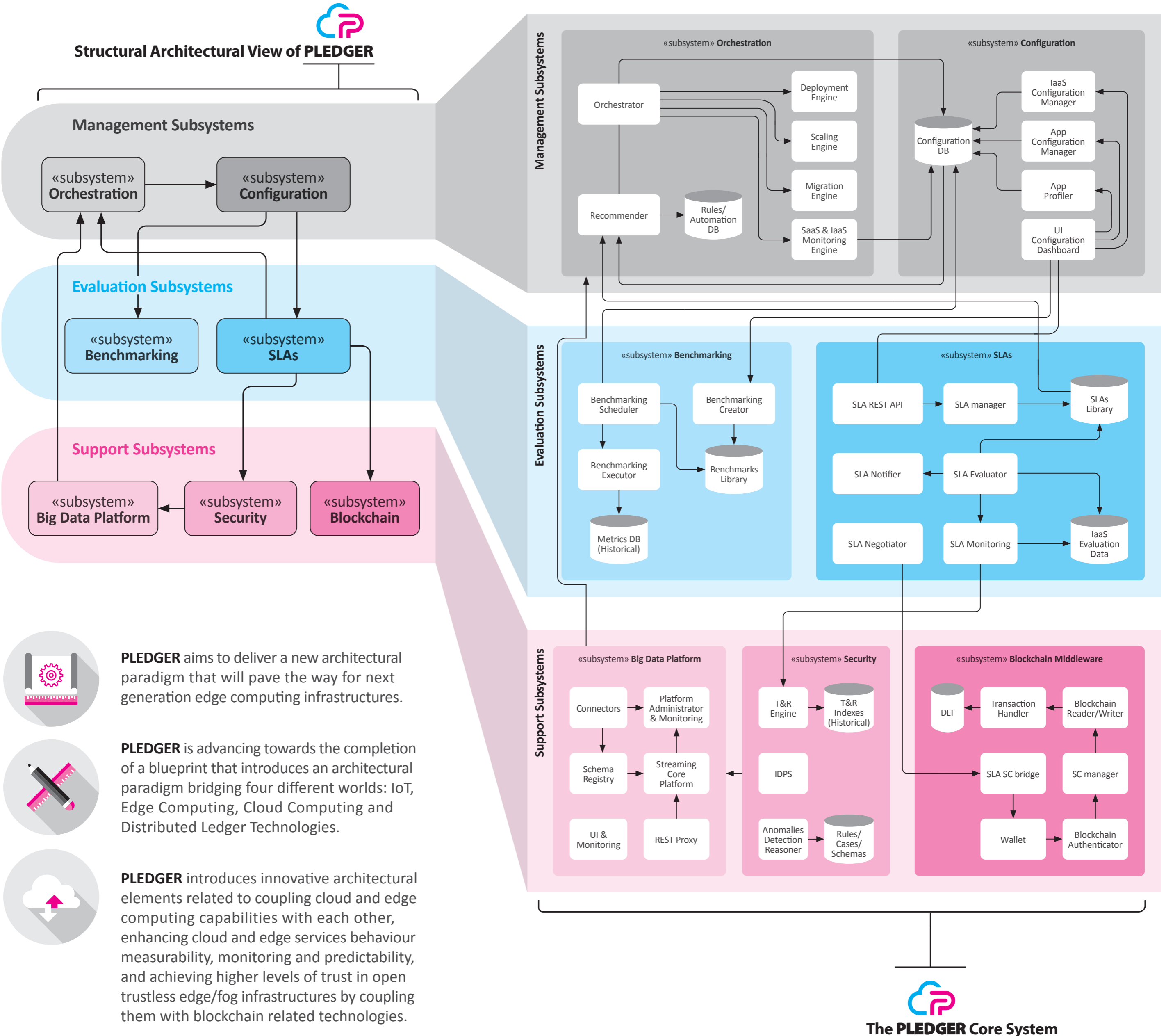


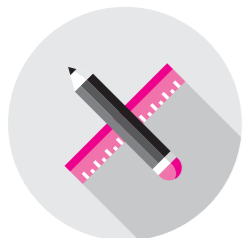


Reference Architecture

Structural Architectural View of PLEDGER



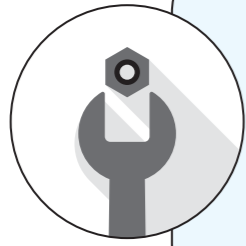
PLEDGER aims to deliver a new architectural paradigm that will pave the way for next generation edge computing infrastructures.



PLEDGER is advancing towards the completion of a blueprint that introduces an architectural paradigm bridging four different worlds: IoT, Edge Computing, Cloud Computing and Distributed Ledger Technologies.



PLEDGER introduces innovative architectural elements related to coupling cloud and edge computing capabilities with each other, enhancing cloud and edge services behaviour measurability, monitoring and predictability, and achieving higher levels of trust in open trustless edge/fog infrastructures by coupling them with blockchain related technologies.



To offer these capabilities, **PLEDGER** introduces management, evaluation and support mechanisms and subsystems that enhance the seamless operation of future edge/cloud applications, such as Mixed Reality applications on the edge, Edge Infrastructure for safety of Vulnerable Road Users, and Data mining on the edge.

Paving the way for next-generation edge computing

